

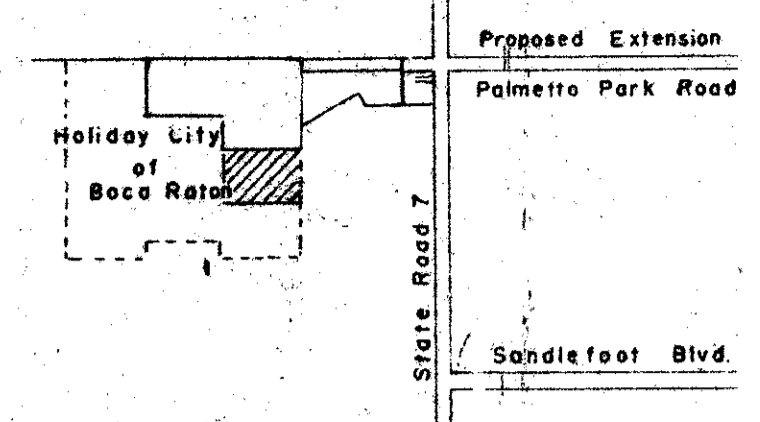
HOLIDAY CITY AT BOCA RATON SECTION 4
 A PLAT OF A PORTION OF SECTION 25, TOWNSHIP 47 SOUTH, RANGE 41 EAST
 AND A REPLAT OF A PORTION OF BLK. 12, FLORIDA FRUIT LAND CO. SUBDIVISION NO. 2 AS RECORDED IN
 PLAT BOOK NO. 1, PAGE 102, PUBLIC RECORD OF PALM BEACH COUNTY, FLORIDA

PALM BEACH COUNTY, FLORIDA

JOHN A. GRANT, JR., INC.

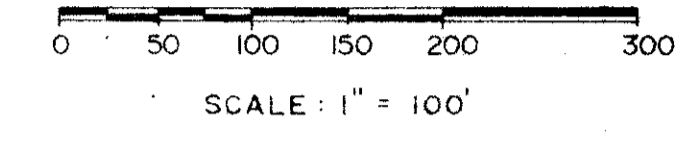
CONSULTING ENGINEERS AND LAND SURVEYORS

BOCA RATON, FLORIDA



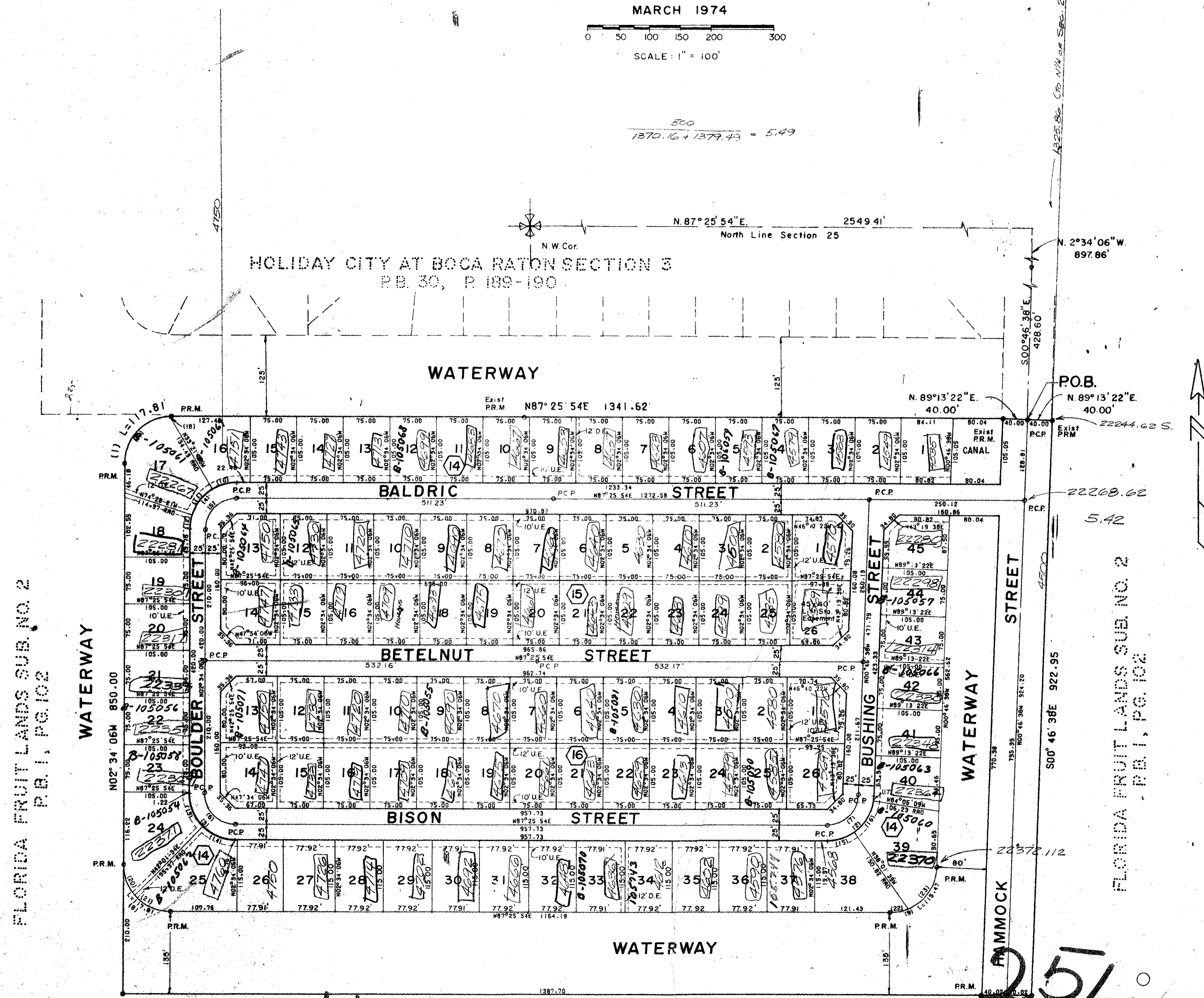
SHEET 2 OF 2

MARCH 1974



SCALE: 1" = 100'

$$\frac{500}{1370.16 + 1377.43} = 5.49$$



FLORIDA FRUIT LANDS SUB. NO. 2
P.B. 1, PG. 102

FLORIDA FRUIT LANDS SUB. NO. 2
P.B. 1, PG. 102

ARC DATA

STATION	RADIUS	DELTA	TAN	CH. BRG.
1	90.00	88.12	32.00	M42 25 54E
2	115.47	75.00	88.12	M43 19 30E
3	117.81	75.00	00.00	M47 34 00W
4	117.81	75.00	00.00	M42 25 54E
5	76.54	50.00	00.00	M42 25 54E
6	76.54	50.00	00.00	M47 34 00W
7	76.98	50.00	88.12	M47 34 00W
8	76.98	50.00	88.12	M42 25 54E
9	90.00	88.12	32.00	M47 34 00W
10	115.47	75.00	88.12	M43 19 30E
11	117.81	75.00	00.00	M42 25 54E
12	117.81	75.00	00.00	M47 34 00W
13	76.54	50.00	00.00	M42 25 54E
14	76.54	50.00	00.00	M47 34 00W
15	76.98	50.00	88.12	M47 34 00W
16	76.98	50.00	88.12	M42 25 54E
17	90.00	88.12	32.00	M47 34 00W
18	115.47	75.00	88.12	M43 19 30E
19	117.81	75.00	00.00	M42 25 54E
20	117.81	75.00	00.00	M47 34 00W
21	76.54	50.00	00.00	M42 25 54E
22	76.54	50.00	00.00	M47 34 00W
23	76.98	50.00	88.12	M47 34 00W
24	76.98	50.00	88.12	M42 25 54E
25	90.00	88.12	32.00	M47 34 00W

Note:
 There will be no Buildings, Trees or
 Shrubs placed on easements.

This instrument was prepared by:
 John A. Grant, Jr., John A. Grant, Jr., Inc.
 3333 North Federal Hwy., Boca Raton, Fla.

HOLIDAY CITY

25/47/41

0478-3070

Bearings shown hereon are based on N 87° 25' 54" E, along the North line of Section 25, Township 47 South, Range 41 East, as recorded by Holiday City at Boca Raton in Plat Book 29, Page 192 of the Public Records of Palm Beach County, Florida.